

# Histogram

- [Overview](#)
  - [Chart Data Options](#)
- [Histogram Tutorial](#)
  - [Summary](#)
  - [Tutorial](#)

## Overview

[top](#)

Shows the number of times a given value occurs in the dataset.

## Chart Data Options

Option	Description
Horizontal Axis	Select the metric you wish to analyse the distribution of.
Colour	Optional: You can select one field to split your values by colour.

## Histogram Tutorial

[top](#)

### Summary

In order to set up a Histogram Chart you will need:

1. Create a report with chart display
  - a. Select a field to use as the **Horizontal Axis**
  - b. Select a field to use as the **Colour** (optional field)
  - c. Enable the display of **duplicate records**
2. Create your chart, selecting **Histogram** as the type under the **Analytical** heading
3. Provide the **Horizontal Axis** and **Colour** options
4. Customise the Chart as required
5. Proceed to the **Output** step
6. **Save** your report

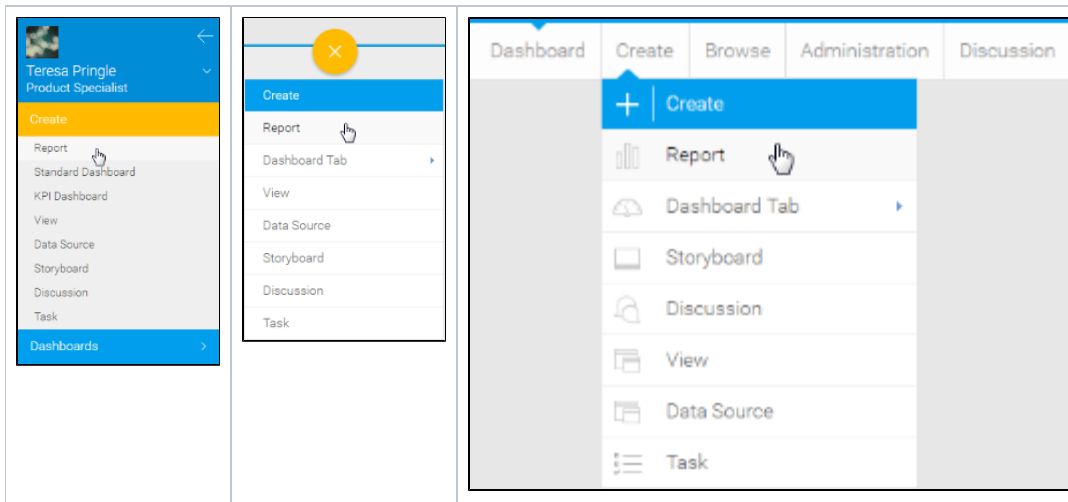
### Tutorial

1. Start the **Report** creation process by using one of these methods:

- **Left Side Nav** - open the left side navigation panel, click on Create, select the Report option
- **Top Right Button** - click on the create button, select the Report option.
- **Toolbar** - click on the Create link in the toolbar, select the Report option.

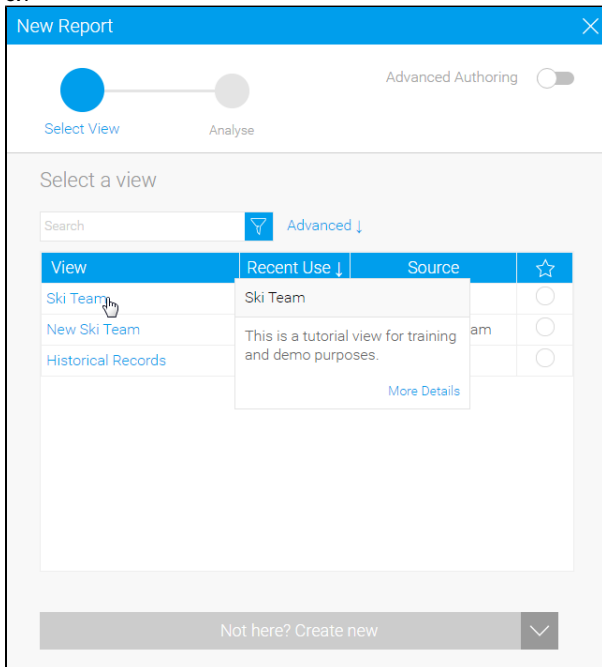
You will now see the **New Report** lightbox.

<b>Left Side Nav</b>	<b>Top Right</b> <b>(with Left Side Navigation enabled)</b>	<b>Toolbar</b>
----------------------	--	----------------



2. Click on the **Ski Team** view in order to use the fields defined within it for creating the report.

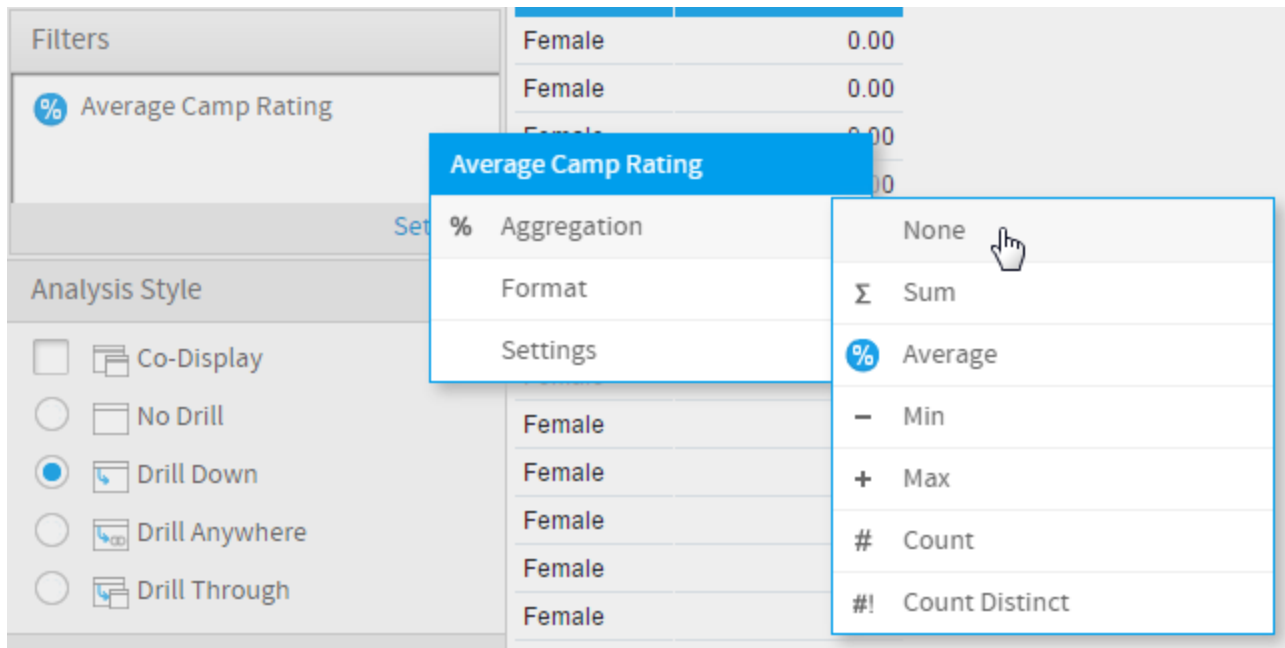
3. You will now be taken to the **Data** step of the **Report Builder**.



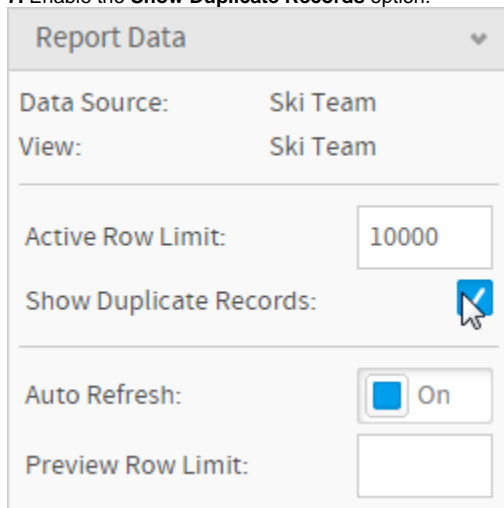
4. Add **Gender** and **Camp Rating** to **Columns**.

5. Add **Camp Rating** to **Filters**.

6. Remove the aggregation from both copies of the **Camp Rating** field.

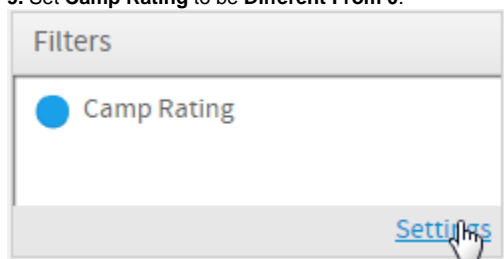


7. Enable the **Show Duplicate Records** option.

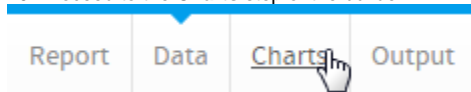


8. Open the filter **Settings** menu.

9. Set **Camp Rating** to be **Different From 0**.



10. Proceed to the **Charts** step of the builder.



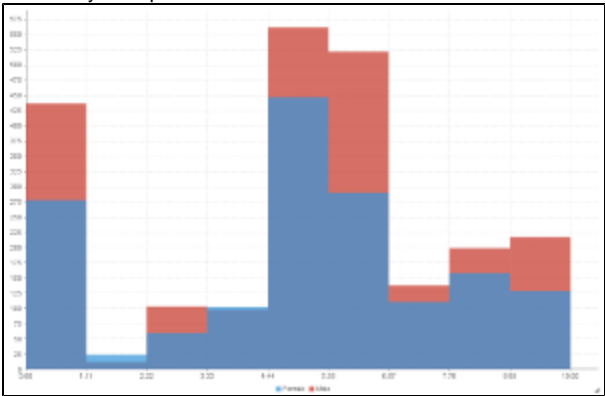
11. Select the **Histogram** chart from the **Analytical** section of the charts panel on the right of the screen.



12. Set the following components:

- **Horizontal Axis:** Camp Rating
- **Colour:** Gender

13. Save your report



[top](#)